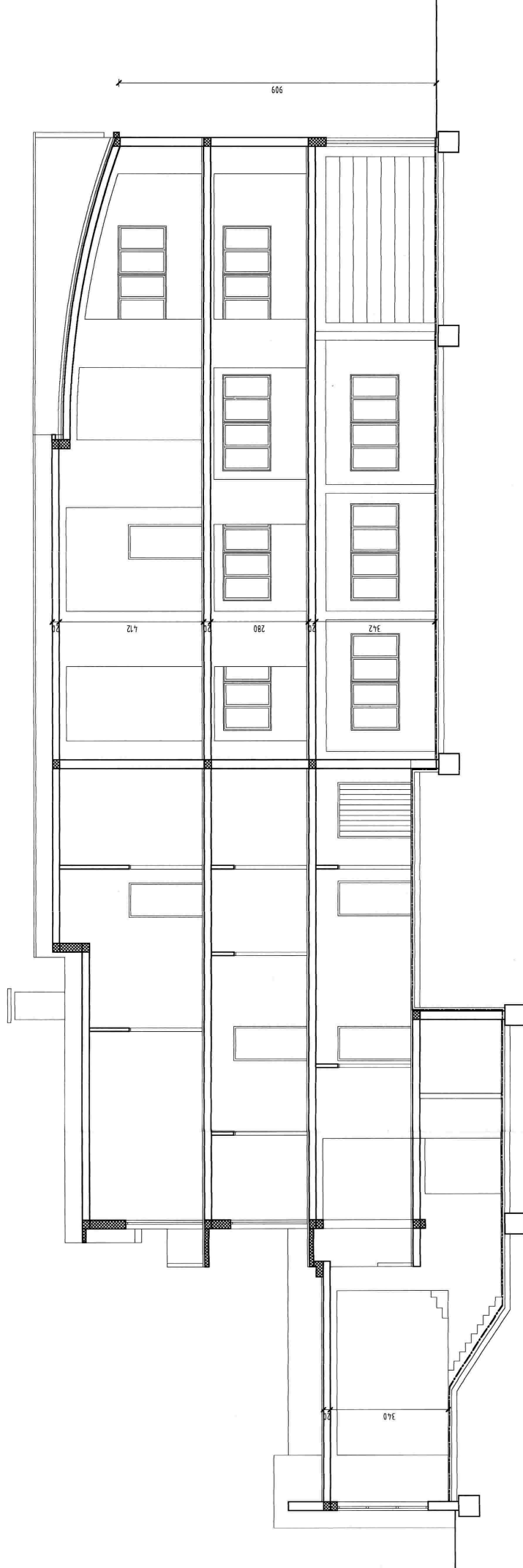
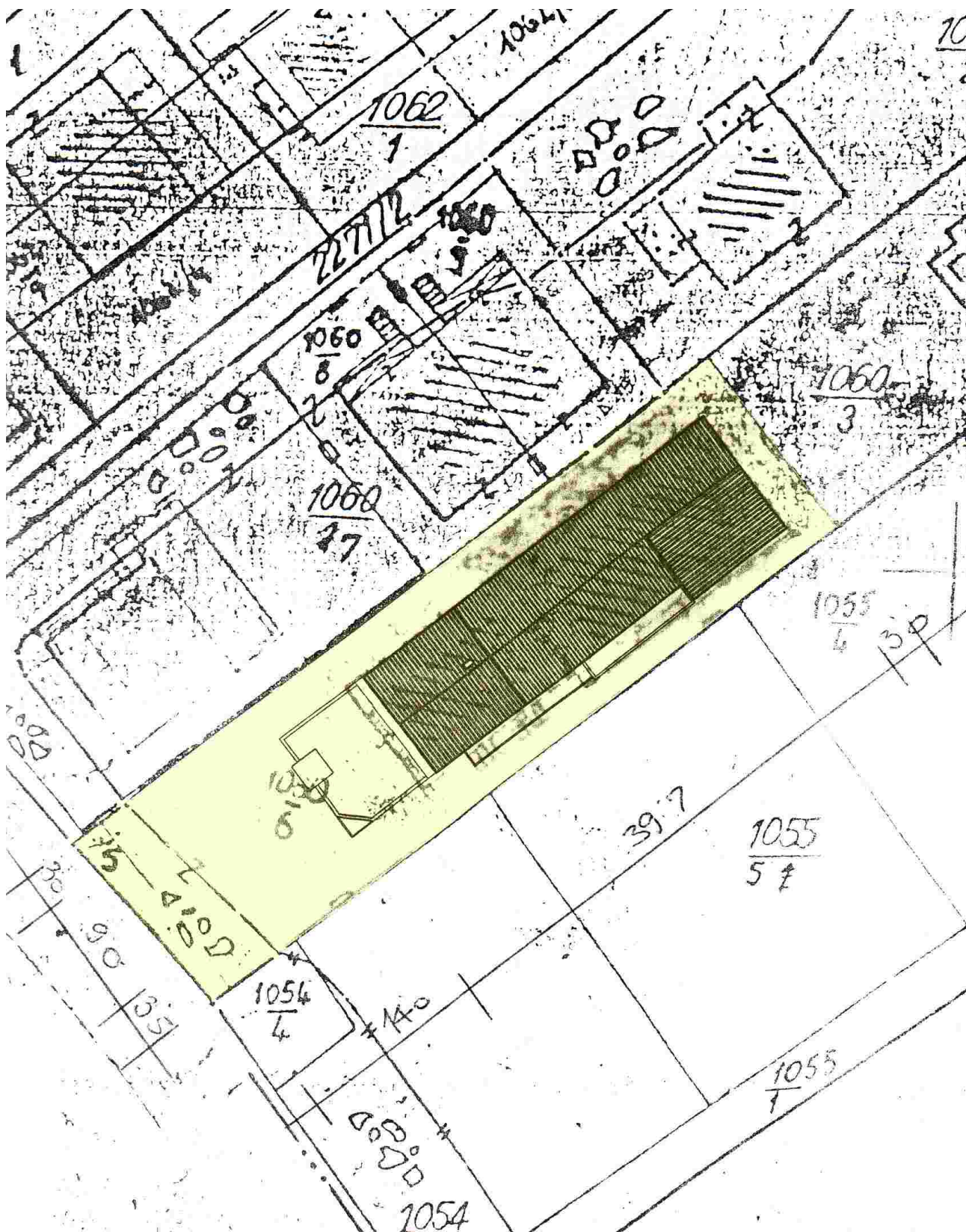
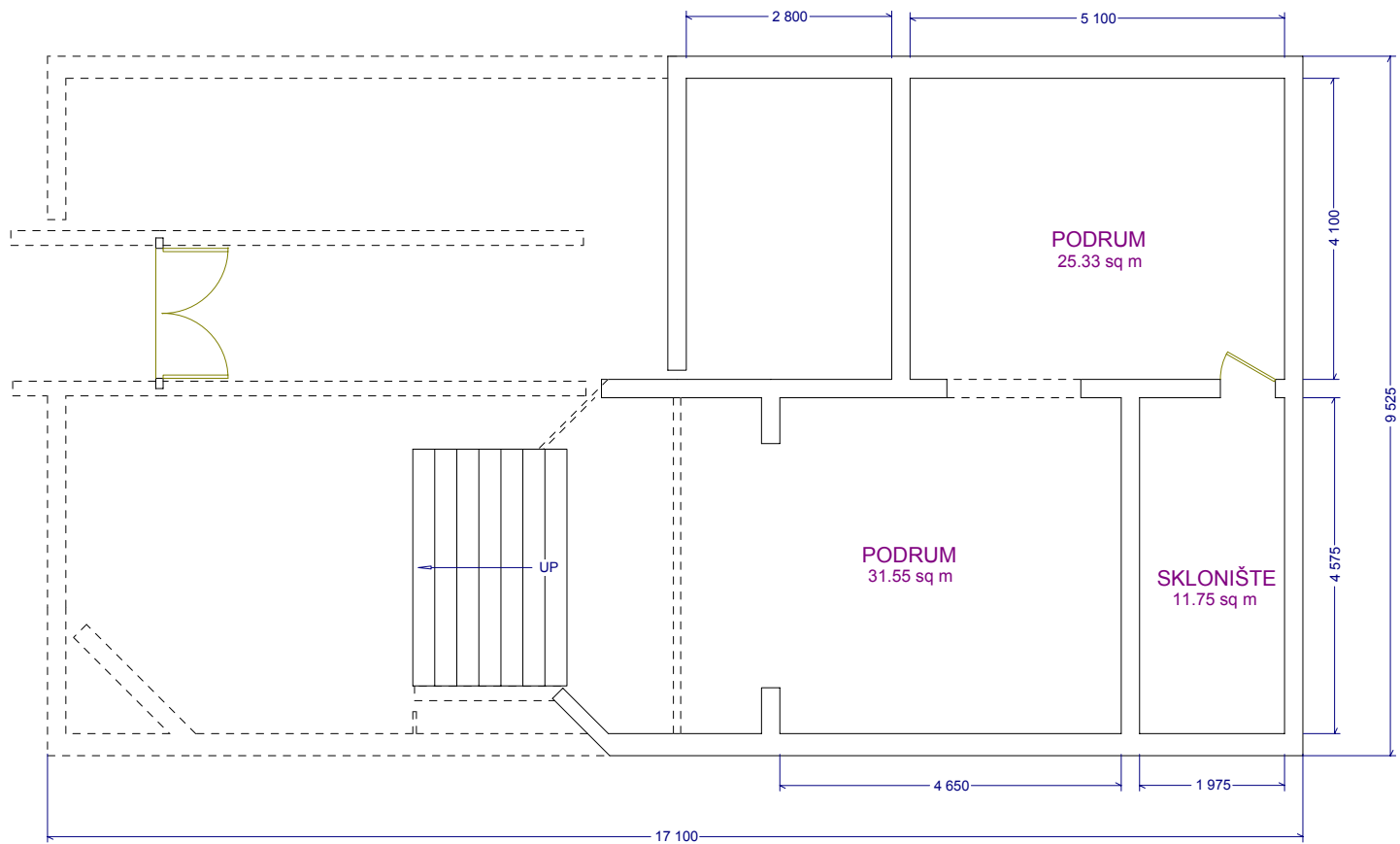


# Presjek zgrade



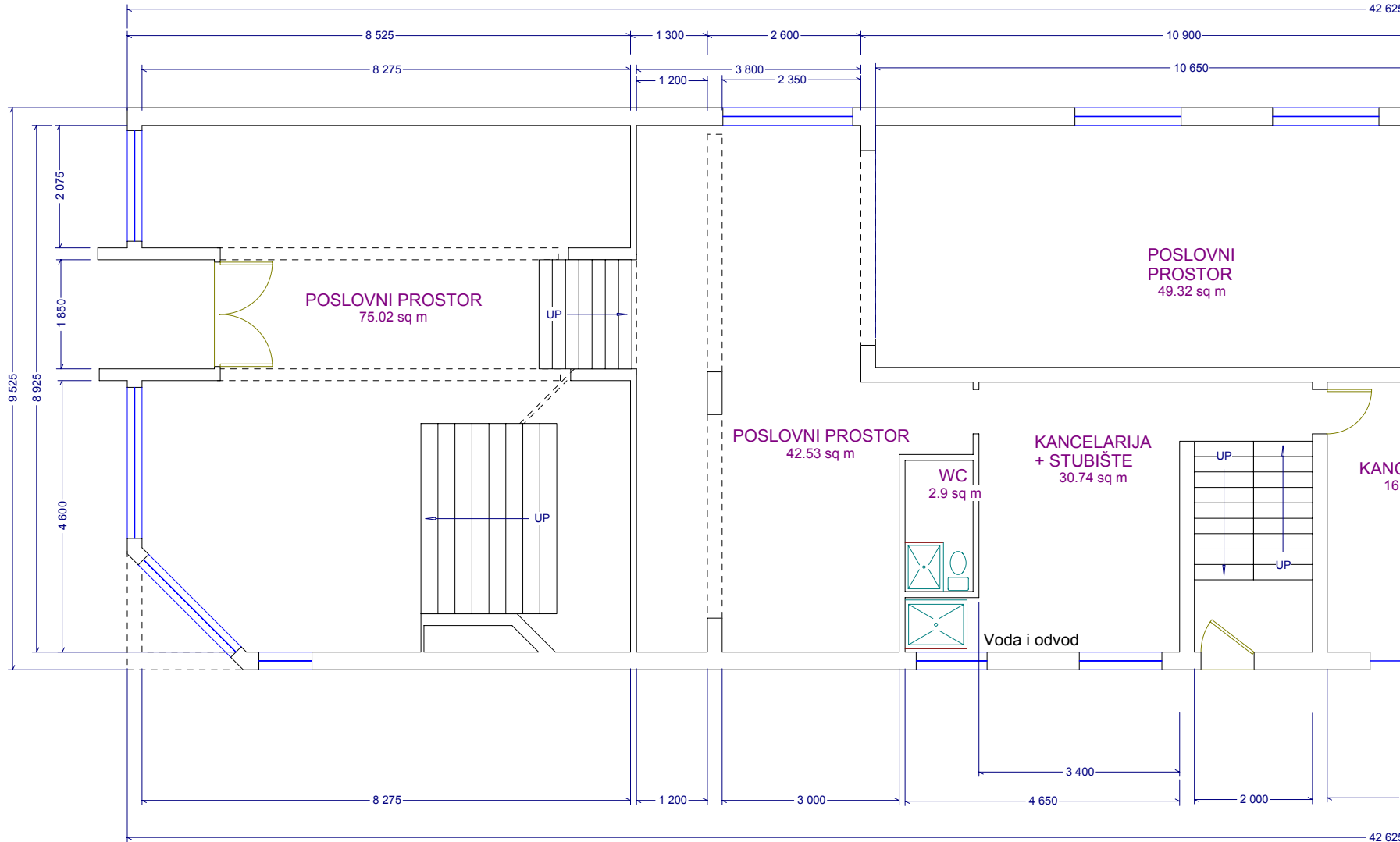
# Položajni nacrt



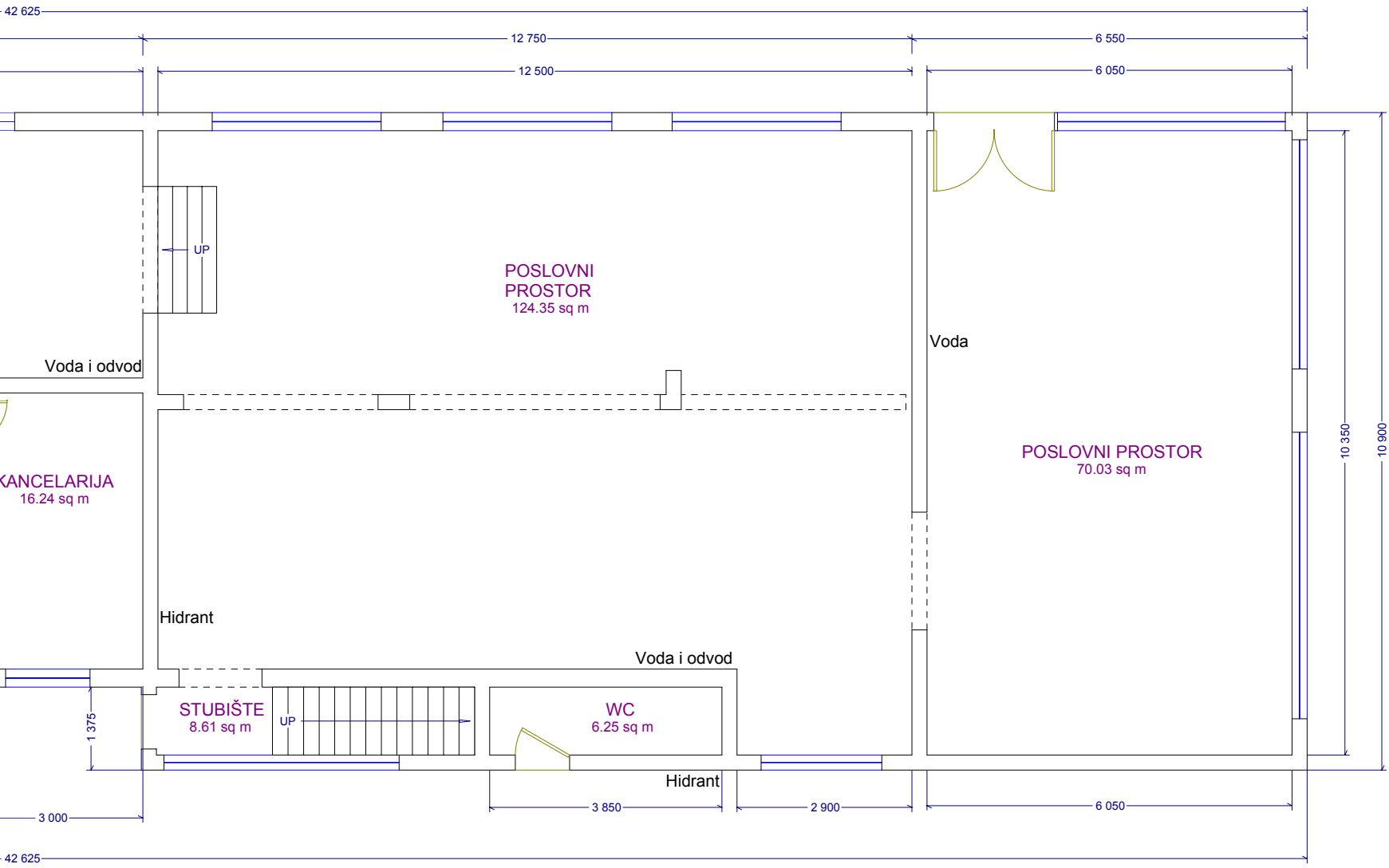


**PODRUM**  
82.1 sq m

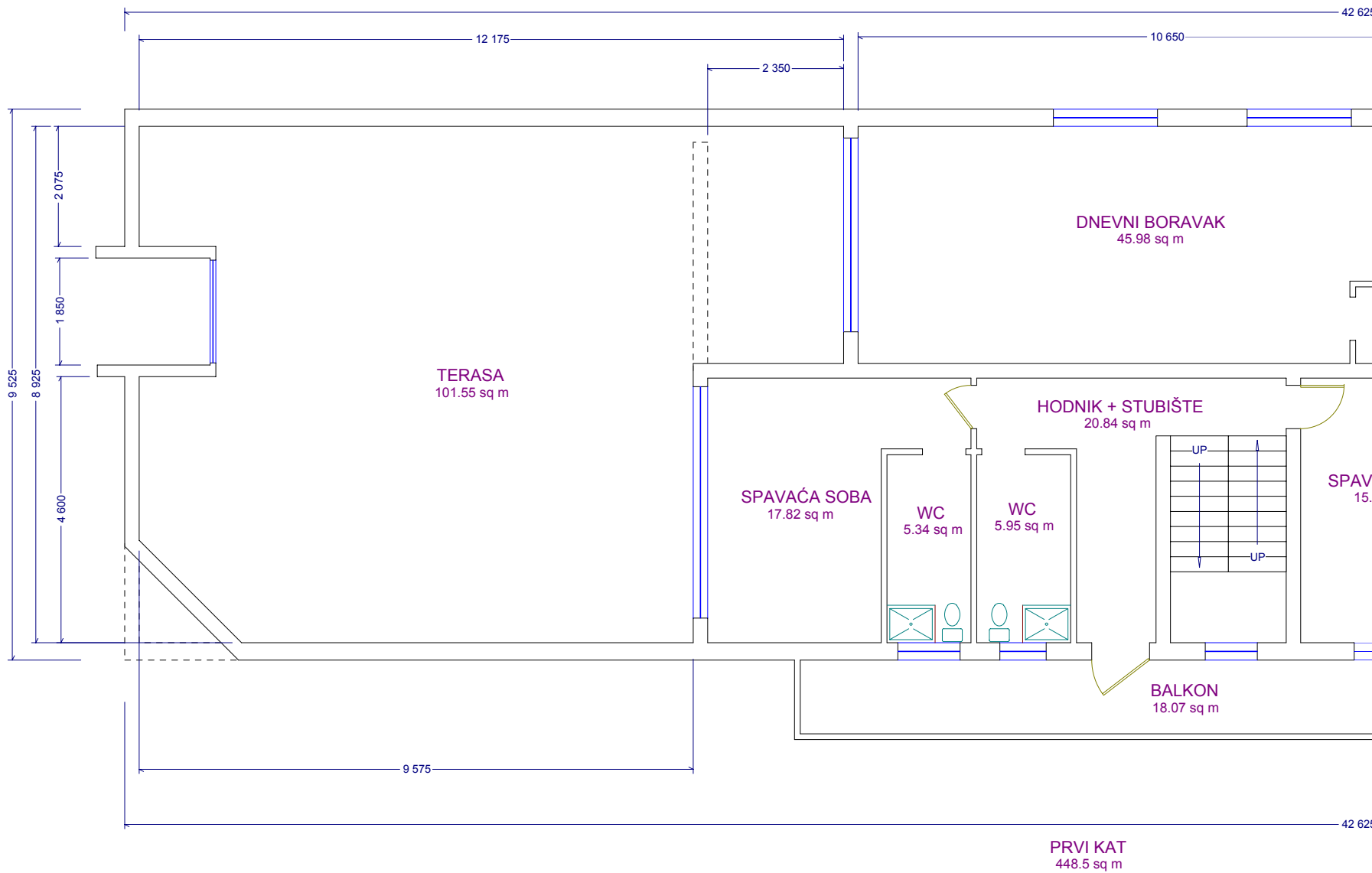
1:100

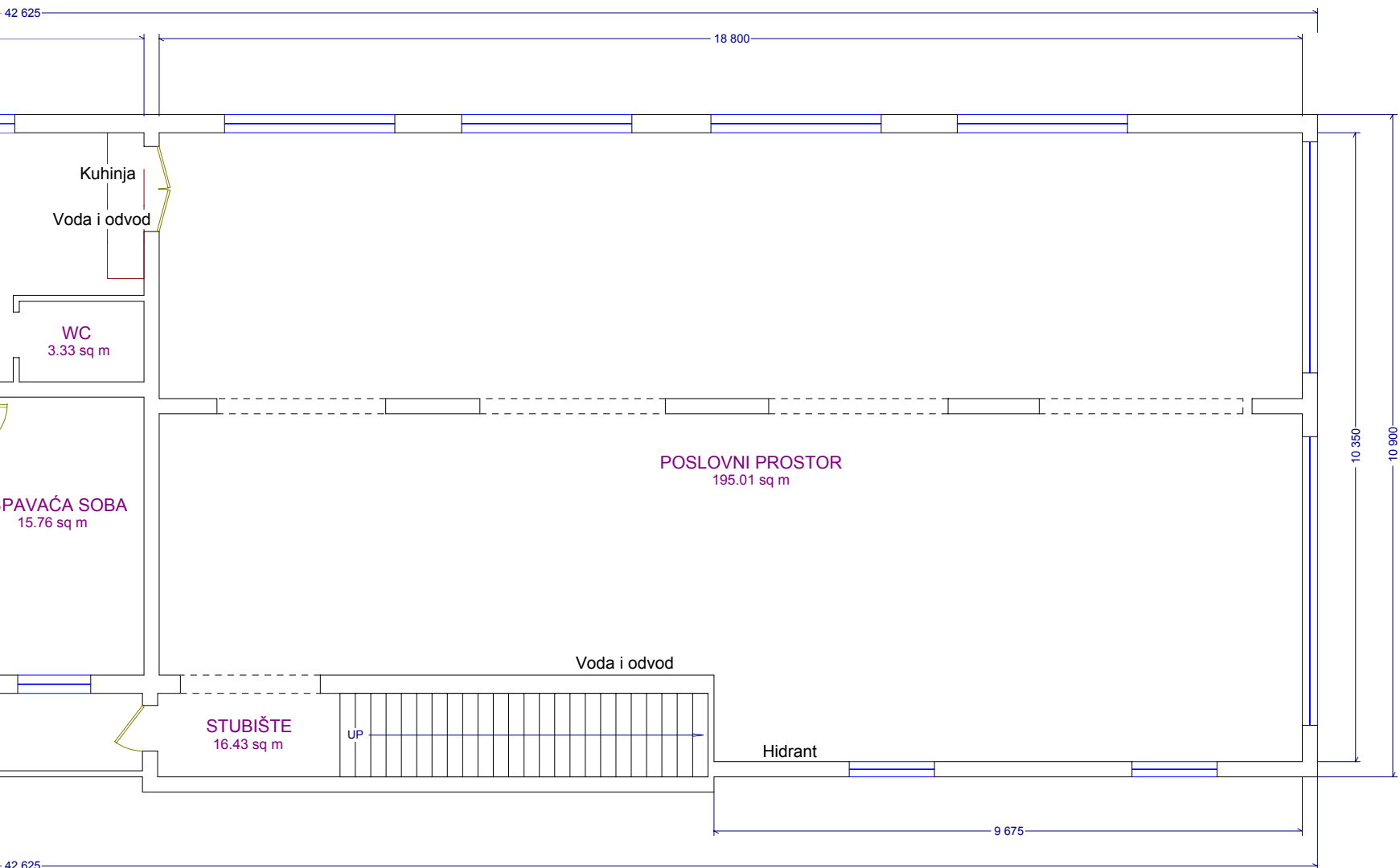


PRIZEMLJE  
430. sq m

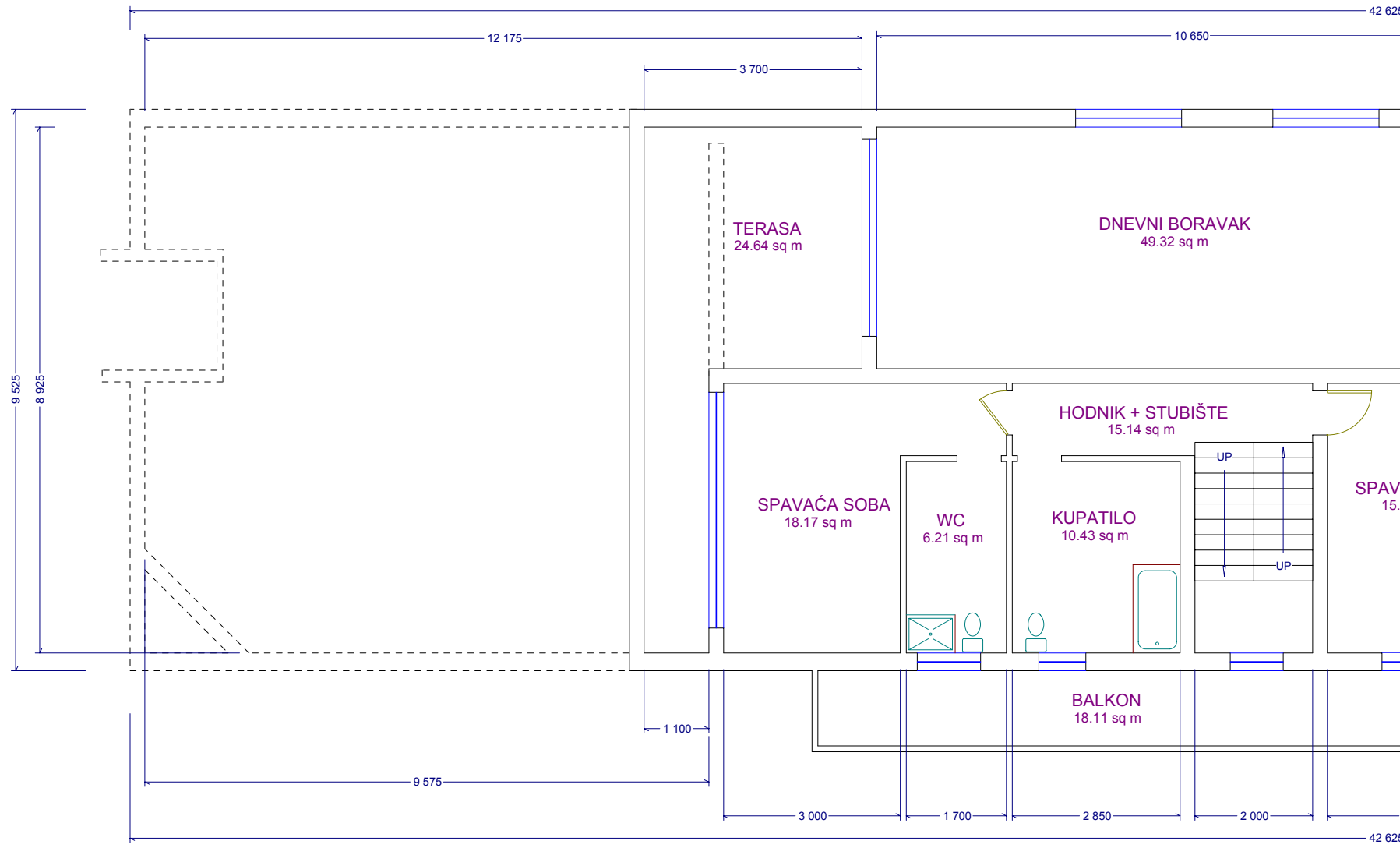


1:100





1:100



**DRUGI KAT**  
448.5 sq m



42 625

18 800

Voda i odvod

PAVAĆA SOBA  
15.76 sq m

STAMBENI PROSTOR  
200.27 sq m

10 350

10 900

Voda i odvod

UP

3 000

2 700

9 675

42 625

